

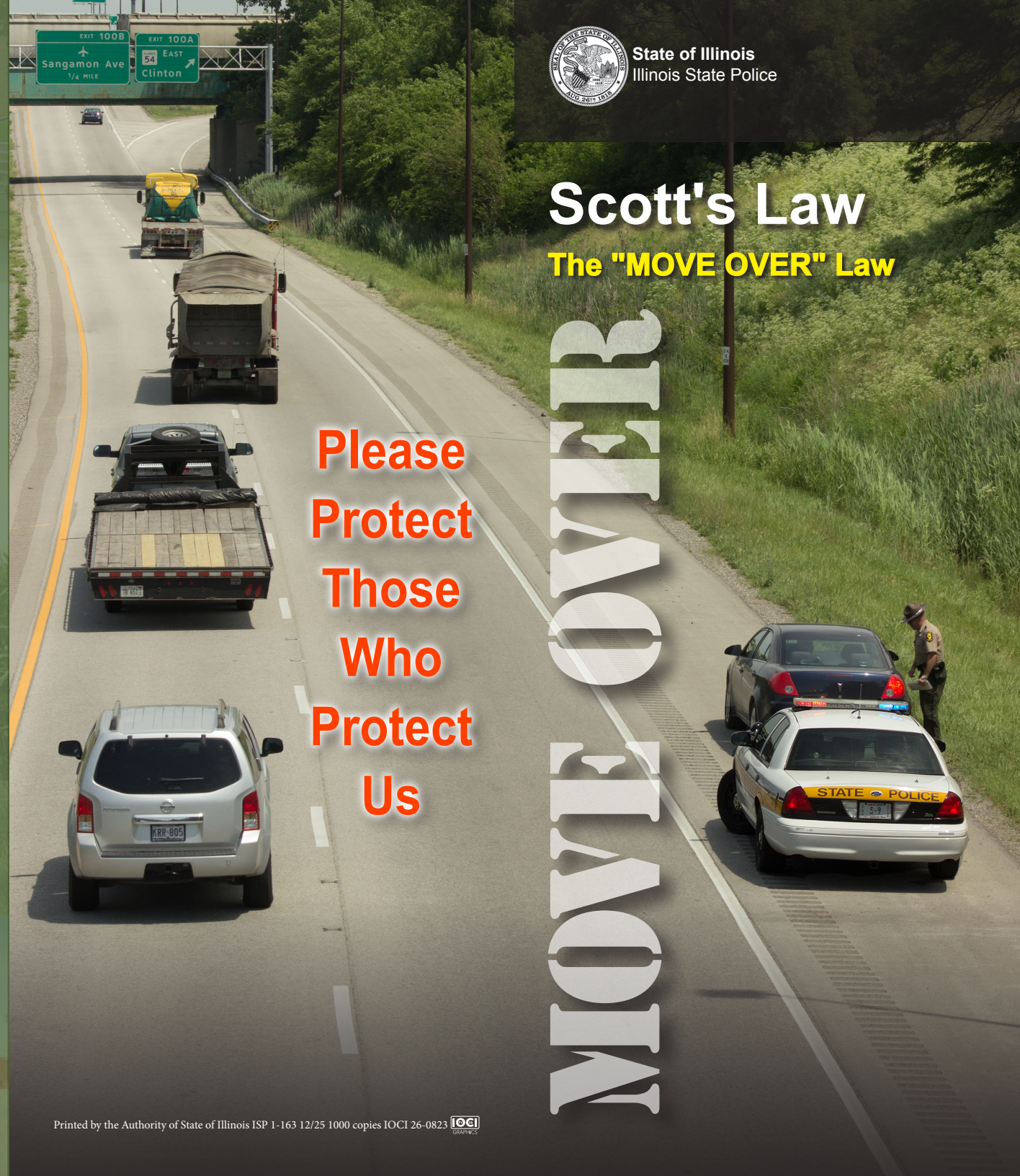


State of Illinois
Illinois State Police

Scott's Law, 625 ILCS 5/11-907(c-5). The driver of a vehicle shall yield the right-of-way to any authorized emergency vehicle obviously and actually engaged in work upon a highway, whether stationary or not, and displaying flashing lights.

NOTICE

**MOVE OVER - SLOW DOWN
FOR EMERGENCY OR
MAINTENANCE VEHICLES
IT'S THE LAW**



Scott's Law
The "MOVE OVER" Law

**Please
Protect
Those
Who
Protect
Us**

MOVE OVER

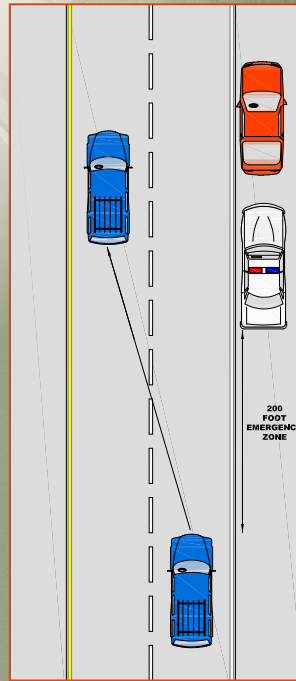
IF IT'S FLASHING – MOVE OVER!

The Move Over Law applies to all authorized emergency vehicles, stationary or not, displaying flashing, oscillating lights, such as police vehicles, ambulances, fire trucks, and commercial trucks and cars, including tow trucks and road repair vehicles. Drivers must also yield to any pedestrian directly involved in an emergency scene.

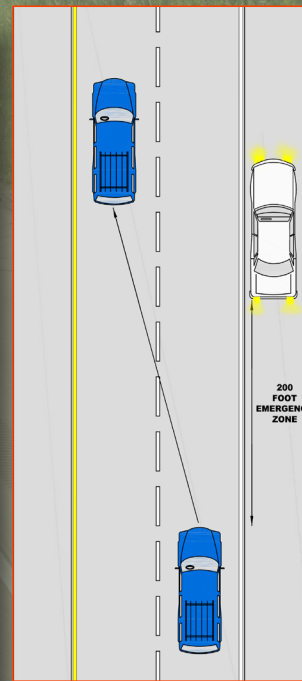
- **reduce your speed**
- **change lanes if possible**
- **proceed with due caution**

An authorized emergency vehicle, under Scott's Law, includes **ANY** vehicle authorized by law to be equipped with oscillating, rotating, or flashing lights under Section 12-215 of this Code, while the owner or operator of the vehicle is engaged in his or her official duties.

Emergency Vehicle



Hazard Lights Flashing



For more information, or to request a safety presentation, please send an email to the ISP Safety Education Unit at:

ISP.Safety.Education@illinois.gov

or contact your local ISP Troop:

<https://isp.illinois.gov/Patrol/TroopMap>

SCOTT'S LAW

Scott's Law was named after Lieutenant Scott Gillen of the Chicago Fire Department who was struck and killed by an intoxicated driver while assisting at a crash on the Dan Ryan Expressway.

THE "MOVE OVER" LAW

